

**ISAF SAILING WORLD CUP HYÈRES-TOULON PROVENCE MÉDITERRANÉE
A 2013-2014 ISAF Sailing World Cup Regatta**

SAILING INSTRUCTIONS

[DP] denotes a rule for which the penalty is at the discretion of the International Jury.

[NP] denotes that a breach of this rule will not be grounds for a protest by a boat.

[SP] denotes a rule for which a standard penalty may be applied by the race committee without a hearing"

1 RULES

- 1.1 The regatta will be governed by the rules as defined in *The 2013-2016 Racing Rules of Sailing* (RRS).
- 1.2 The Fédération Française de Voile prescriptions that apply are stated in full in NoR Addendum B.
- 1.3 Decisions of the International Jury will be final as provided in RRS 70.5.
- 1.4 If there is a conflict between languages the English text will take precedence.
- 1.5 Appendix B, Windsurfing Competition Rules, will apply.
- 1.6 Appendix P, Special Procedures for Rule 42, will apply.
- 1.7 For the Men's Skiff, Women's Skiff and Mixed Two Person Multihull events, RRS 44.1 and RRS P2.1 are changed so that the Two-Turns Penalty is replaced by the One-Turn Penalty.
- 1.8 For medal races, ISAF Addendum Q, *Umpired Fleet Racing*, will apply and takes precedence over any conflicting instructions.
- 1.9 This will be a Sonar Class Association Appendix B - Alternative Rules event.
- 1.10 For the 2.4mR event, the 2.4 Norlin OD class rules will apply. However, Schedule K of the 2010 International 2.4 class rules will apply to boats that previously held measurement certification under Schedule K but do not yet hold certification under 2.4 Norlin OD class rules.
- 1.11 The ISAF SWC Equipment Inspection Regulations and its supplement, the Pre Event Class Rule Compliance shall apply.

2 [DP] [NP] SAFETY REGULATIONS

- 2.1 The race committee will protest a boat for a breach of these safety regulations.
- 2.2 Competitors are advised to wear personal flotation devices at all times while afloat, except briefly while changing or adjusting clothing or personal equipment.
- 2.3 Boats not leaving the harbour for a scheduled race shall promptly notify the Race Office.
- 2.4 [SP] On arrival in the course area each day, each boat shall sail past the stern of the race committee signal boat on starboard tack and hail her sail or bow number until acknowledged by the race committee.
- 2.5 A boat that retires from racing shall notify the race committee before leaving the racing area, or if that is not possible, shall notify the race office as soon as possible after returning ashore.
- 2.6 Boats retiring from racing in accordance with SI 2.5 shall complete a retirement declaration form at the race office before the protest time limit.

- 2.7 In accordance with NoR 16, Berthing, boats shall return to and remain in their assigned berths.
- 2.8 Boats not racing shall remain clear of boats that are racing and official boats.
- 2.9 When the race committee displays flag V with repetitive sounds, all official and support boats shall monitor the race committee radio channel for search and rescue instructions.
- 2.10 The Race Committee VHF Channels are: Alpha-67, Bravo-8, Charlie-72, Delta-6, Echo-77, Fox-Trot-15.

3 [DP] CODE OF CONDUCT

- 3.1 Competitors shall comply with any reasonable request from a regatta official.
- 3.2 Competitors shall handle any boats or equipment provided by the organizing authority with proper care and seamanship, and in compliance with any written instructions.

4 COMMUNICATIONS WITH COMPETITORS

- 4.1 Notices to competitors will be posted on the official notice board located near the Race Office.
- 4.2 Notices will also be posted on <http://www.swc.ffvoile.com>. Failure to post a notice at these other locations will not be grounds for redress. This changes RRS 62.
- 4.3 When a visual signal is displayed over an area, event or fleet flag, the signal applies only to that area, event or fleet. This changes the Race Signals preamble.
- 4.4 Signals ashore will be displayed on the flagpole located on the pontoon in front of the BAN Club (for RSX and Nacra) and on the roof of the Yacht Club Building (all other classes).
- 4.5 When flag AP is displayed ashore, '1 minute' is replaced with 'not less than 50 minutes' (30 minutes for the 49er and 49er FX) in the race signal AP. Flag AP over H displayed ashore means 'Boats shall not leave the harbour. Wait for further instructions.' This changes Race Signals AP over H.
- 4.6 When flag Y is displayed ashore, RRS 40 applies at all times while afloat. This changes the Part 4 preamble.

5 CHANGES TO SAILING INSTRUCTIONS

- 5.1 Any change to the format or schedule of races will be posted by 21:00 on the day before it will take effect and any change to the sailing instructions will be posted before 09:00 on the day it will take effect.
- 5.2 Any reassignment of events or fleets to course areas will be posted before 09:00 on the day it will take effect, or if flag AP is displayed ashore, 30 minutes before flag AP for that class or fleet is removed.
- 5.3 When any SI addendum is changed, an updated version of it will be posted on the Official Notice Board as part of these sailing instructions.
- 5.4 Any change to the sailing instructions will be approved by the principal race officer and the ISAF Technical Delegate.

6 FORMAT OF RACING

- 6.1 For Paralympic events the format will be a single series.
- 6.2 The format for each Olympic event consists of an opening series and a medal race stage. If the event is split into fleets, the opening series will be divided into a qualifying series and a final series.
- 6.3 Qualifying series
- 6.3.1 Boats will be assigned to yellow and blue fleets of, as nearly as possible, equal size and ability. Initial assignments will be made by a seeding committee appointed by the race committee. Those assignments will be posted by 21:00 on the day before the first scheduled race for each event.
- 6.3.2 Boats will be reassigned to fleets after each day of racing, except if on the first day fewer than two races are completed by both fleets. If both fleets have completed the same number of races, boats will be reassigned on the basis of their ranks in the series. If both fleets have not completed the same number of races, the series scores for reassignment will be calculated for those races, numbered in order of completion, completed by both fleets. Reassignments will be made as follows:
- Rank in series Fleet assignment*
- First Yellow
Second Blue
Third Blue
Fourth Yellow
Fifth Yellow
Sixth Blue
Seventh Blue
Eighth Yellow
and so on
- If two or more boats have the same rank, they will be entered in the left column in the order of fleets in SI 6.3.1.
- 6.3.3 Assignments will be based on the ranking available at 21:00 that day regardless of protests or requests for redress not yet decided.
- 6.3.4 If all fleets have not completed the same number of races by the end of a day, the fleets with fewer races will continue racing the following day until all fleets have completed the same number of races. All boats will thereafter race in the new fleets.
- 6.4 Final series:
- 6.4.1 A final series will be scheduled for each class with 4 or more qualifying series races completed.
- 6.4.2 Boats will be assigned to the gold or silver fleets on the basis of their ranks in the qualifying series. The gold Series fleets will have the number of boats shown in Addendum D. Boats with the best qualifying-series ranks will race all final-series races in the gold fleet.
- 6.4.3 Any recalculation of final Series ranking after boats have been assigned to gold Series fleets will not affect the assignments except that a redress decision may promote a boat to a higher fleet.
- 6.5 Medal Race Stage
- 6.5.1 A medal stage will be scheduled for each Olympic class with 3 or more opening series races completed. For the Men's and Women's Skiff the medal stage will be 3 races, for all other classes it will be one race.
- 6.5.2 For events with a medal stage the ten boats ranked highest in the opening series will be assigned to compete in the medal stage.
- 6.5.3 Assignments to a medal stage will be based on the ranking available at 08:00 on the day of the medal stage. The protest committee may extend the time limit.
- 6.6 The number of fleets, number of races, races per day, and the types of races are shown in SI Addendum D.

7 SCHEDULE OF RACES

- 7.1 The total number of races scheduled is shown in SI Addendum D.

- 7.2 The daily race schedule and the scheduled time of the warning signal for the first race are shown in SI Addendum C.
- 7.3 Races not sailed on the scheduled day may be sailed on a following day at the discretion of the race committee.
- 7.4 The opening series and the medal stage, if any, will take place as detailed in SI Addendum C.
- 7.5 For all Olympic classes the opening series will be extended if three races have not been completed by the 25th of April 2014 and the medal stage will be cancelled. For split fleet events, the qualifying series will be extended if less than four races have been completed.
- 7.6 The warning signal for each succeeding race will be made as soon as practicable.
- 7.7 To alert boats that a race or sequence of races will begin soon, the orange starting line flag will be displayed with one sound at least five minutes before a warning signal is made.
- 7.8 On the last scheduled day of racing for each event, no warning signal will be made after 1500.

10 COURSE AREAS

- 10.1 The course areas are shown in SI Addendum A.
- 10.2 Events are assigned to course areas as stated in SI Addendum C.
- 10.3 For the medal stage, two race course areas will be used. The locations will be posted on the official notice board in accordance with SI 5.1.

11 THE COURSES

The diagrams in SI Addendum B show the courses, the course designations, the approximate angles between legs, the order in which marks are to be passed, and the side on which each mark is to be left.

12 MARKS

- 12.1 Marks 1, 2, 3, and 4, or associated gate marks, will be as follows:

<u>Course Area</u>	<u>Marks 1, 2, 3, 4</u>	<u>New Mark</u>	<u>Inflatable Starting Line Mark</u>	<u>Inflatable Finishing Line Mark</u>
Alpha	White cylinder	Orange cylinder	If any, orange cylinder	Yellow cylinder
Bravo	Orange cylinder	Black cylinder	If any, orange cylinder	Yellow cylinder
Charlie	White cylinder	Orange cylinder	If any, orange cylinder	Yellow cylinder
Delta	Yellow cylinder	White cylinder	If any, orange cylinder	Yellow cylinder
Echo	Green cylinder	Orange cylinder	If any, orange cylinder	Yellow cylinder
Foxtrot	Black cylinder (orange for Sonar and 2,4mR top mark)	Yellow cylinder	If any, orange cylinder	Yellow cylinder

- 12.2 Offset marks will be white cylinder on Charlie and black cylinder on Foxtrot.
- 12.3 Marks S1, S2, and S3 will be orange cylinder.
- 12.4 The starting and finishing line marks will be race committee vessels or inflatable marks.

13 CLASS FLAGS

Class flags will be class insignia on the following background:

Event	Class Insignia	Background Colour
Men's Board	RS:X	White
Women's Board	RS:X	Light Blue
Men's One Person Dinghy	Laser Standard	White
Women's One Person Dinghy	Laser Radial	Light Blue
Men's 2nd One Person Dinghy	Finn	White
Men's Skiff	49er	White
Women's Skiff	49er FX	Light Blue
Men's Two Person Dinghy	470	White
Women's Two Person Dinghy	470	Light Blue
Mixed Two-Person Multihull	Nacra	White
One Person Paralympic	2.4 mR	White
Two Person Paralympic	SKUD18	White
Three Person Paralympic	Sonar	White

14 THE START

14.1 The starting line will be between a staff displaying an orange flag on the race committee vessel at the starboard end and either

- (a) the course side of the port-end inflatable starting mark, or
- (b) a staff displaying an orange flag on the race committee vessel at the port end.

14.2 [DP] A buoy may be attached to the race committee starting boat anchor line just below keel depth. Boats shall not pass between this buoy and the race committee starting boat at any time. This buoy is part of the race committee starting boat ground tackle.

14.3 [DP] When a starting sequence is in progress, boats whose warning signal has not been made shall avoid the starting area. The starting area is defined as a rectangle 50 meters from the starting line and marks in all directions.

14.4 If flag U has been displayed as the preparatory signal, no part of a boat's hull, crew or equipment shall be in the triangle formed by the ends of the starting line and the first mark during the last minute before her starting signal. If a boat breaks this rule and is identified, she shall be disqualified without a hearing but not if the race is restarted or resailed or postponed or abandoned before the starting signal. This changes rule 26 *Starting Races* and RRS 63.1. When flag U is used as the preparatory signal rule 29.1 *Individual recall* does not apply. The scoring abbreviation for a flag U penalty is UFD. This changes A11 *Scoring Abbreviations*

15 COURSE CHANGES

15.1 To change the next leg of the course, the race committee will (a) lay a new mark, (b) move the finishing line, or (c) move the leeward gate. When a new mark is laid, the original mark will be removed as soon as possible. When in a subsequent change a new mark is replaced, it will be replaced by an original mark.

15.2 Courses will not be shortened. This changes RRS 32.

16 THE FINISH

The finishing line will be between a staff displaying an orange flag on the race committee vessel and either:

- (a) the course side of the nearby inflatable finishing mark, or
- (b) a staff displaying an orange flag on the nearby race committee vessel.

17 TIME LIMITS AND TARGET TIMES

17.1 For opening series, time limits and target times are as follows:

Class	Time Limit	Mark 1 Time Limit	Finish Window	Target Time
470, Laser, Laser Radial, Finn	75	25	15	50
Nacra, 49er, 49er FX	50	20	10	30
RS:X	45	20	10	20-25
Paralympic Events	90	30	20	60

17.2 For medal stage, time limits and target times are as follows:

Class	Time Limit	Mark 1 Time Limit	Finish Window	Target Time
49er, 49er FX	20	None	5	10
All other classes	40	10	10	20

17.3 If no boat has passed Mark 1 within the Mark 1 Time Limit the race will be abandoned.

17.4 Boats failing to finish within the time stated in the Finish Window after the first boat sails the course and finishes will be scored Did Not Finish. This changes RRS 35, A4 and A5.

20 [DP] EQUIPMENT AND MEASUREMENT CHECKS

Equipment inspections and equipment substitution will be conducted in accordance with the ISAF SWC Equipment Inspection Regulations (EIR).

21 [DP] REPLACEMENT OF CREW

Substitution of competitors will not be allowed without prior written approval of the race committee and shall comply with any restrictions in the Notice of Race.

22 OFFICIAL BOATS

22.1 Official boats will be marked as follows:

- Equipment Inspection – white flag with letter “M”
- Jury/Judges – yellow flag with letter “JURY”
- Media – white flag with letter “PRESS”

Organisers/VIP – white flag with letter “VIP”

Race Committee – white flag with letter of the racing area

Rescue or Course Marshals – colored pennants: A-yellow, B-black, C-red, D-blue, E-green, Fox-pink)

22.2 Actions by official boats or helicopters shall not be grounds for requesting redress by a boat. This changes RRS 60.1(b).

23 [DP] SUPPORT AND SPECTATOR BOATS

23.1 Addendum E - Support Boat Regulations shall apply to all support boats.

23.2 Addendum E - Support Boat Regulations Parts 4 and 5 shall also apply to spectator boats.

24 [DP] [NP] IDENTIFICATION AND ADVERTISING WHILE RACING

24.1 Each day, the first, second and third boats in series ranking at the beginning of the day shall display a yellow, blue and red bib on the crew respectively. In addition, the organizing authority may require a coloured dot to be applied to the mainsail. The organizing authority will supply the bibs and coloured dots, and instructions for their use.

24.2 Boats in specified fleets shall display bow numbers. The organizing authority will supply the numbers and instructions for their use.

24.3 Boats shall display required event sponsor advertising. The organizing authority will supply the advertising and instructions for their use.

24.4 For split fleet events, boats shall display a coloured band or ribbon corresponding to the fleet to which she has been assigned. The organizing authority will supply the bands or ribbons and instructions for their use.

25 SCORING

25.1 The Low Point System shall apply to all races. Except for skiff events, RRS A4.1 is changed so that the points scored in medal races are doubled.

25.2 A boat's score shall be calculated in accordance with RRS A2, except that Medal Race score(s) shall be not excluded.

25.3 When less than three races in the opening series have been completed, no score shall be excluded.

25.4 A boat starting later than 4 minutes after her starting signal will be scored Did Not Start. This changes RRS A4 and A5.

25.5 RRS A4.2 is changed so that those scores are based on

- (a) The number of boats assigned to compete in a single fleet series, or
- (b) The number of boats assigned to the largest fleet in a split fleet qualification series, or
- (c) The number of boats assigned to the fleet in the final series or medal stage.

25.6 Three races are required to be completed to constitute a regatta.

25.7 If at the end of the qualifying series some boats have more race scores than others, scores for the most recent races will be excluded so that all boats have the same number of race scores.

25.8 The boats competing in the medal stage shall be scored highest in the regatta. The boats competing in the Gold Fleet shall be scored higher in the regatta than boats competing in the Silver fleet. This may not apply to a boat disqualified under RRS 5 or 69.

25.9 RRS B8 is deleted. RRS A8 is changed as follows:

25.9.1 For boats competing in the medal stage, ties in the regatta score are broken by applying RRS A8.2 to the medal stage score(s). If a tie remains, ties in the regatta score are broken by applying RRS A8.2 to the opening series scores.

25.9.2 Ties in a split fleet opening series are broken in accordance with RRS A8.2. Ties in a split fleet qualifying series or a single fleet opening series shall be broken in accordance with RRS A8.

25.10 A boat assigned to compete in the medal stage shall make a genuine effort to start, sail the course and finish. The penalty for a breach of this instruction will be ranking the boat tenth in the regatta. If there are two such boats, they will be ranked ninth and tenth, in order of their opening-series ranks, and so on. This changes RRS A2.

25.11 To request correction of an alleged error in posted race or series results, a boat may complete a scoring enquiry form available at the race office.

26 PROTESTS, PENALTIES AND REQUESTS FOR REDRESS

26.1 Protest forms are available at the Jury office, located under Restaurant Les Voiliers in the Yacht Club building. Protests and requests for redress or reopening shall be delivered there within the appropriate time limit.

26.2 For each fleet, the protest time limit is 90 minutes after the last boat has finished the last race of the day.

26.3 Notices will be posted within 30 minutes of the protest time limit to inform competitors of hearings in which they are parties or named as witnesses. Hearings will be held in the protest room, located under Restaurant Les Voiliers in the Yacht Club building beginning at the time posted. Hearings may be scheduled to begin up to 30 minutes before the end of protest time.

26.4 Notices of protests by the race committee or protest committee will be posted to inform boats under RRS 61.1(b).

26.5 A list of boats that have been penalized under Appendix P for breaking RRS 42 and under SI 26.8 will be posted.

26.6 Penalties for breaches of RRS 55, NoR 2.3 (National Flags), NoR 16 (Berthing), NoR 17 (Haul-Out Restrictions), NoR 18 (Diving and Plastic Pools), the EIR, class rules, or rules in the NoR and SIs marked [DP], are at the discretion of the protest committee. A boat may accept a discretionary penalty before a hearing concerning the same incident by completing a form available at the jury office.

26.7 Breaches of rules in the SIs marked [NP] will not be grounds for a protest by a boat. This changes RRS 60.1(a).

26.8 For breaches of NoR 2.3 (national Flags) and the SIs marked [SP], the race committee may apply a standard penalty without a hearing. A list of these breaches and the associated standard penalties will be posted on the Official Notice Board. However, the race committee may protest a boat when they consider the standard penalty to be inappropriate. This changes RRS 63.1 and Appendix A5.

26.9 On the last day of the qualifying series, opening series, or on the last scheduled day of racing, a request for reopening a hearing shall be delivered

(a) within the protest time limit if the requesting party was informed of the decision on the previous day;

(b) no later than 30 minutes after the requesting party was informed of the decision on that day;

This changes RRS 66.

26.10 On the last day of the qualifying series or opening series, or on the last scheduled day of racing, a request for redress based on a jury decision shall be delivered no later than 30 minutes after the decision was posted. This changes RRS 62.2.

27 [DP] RADIO COMMUNICATIONS

A boat shall neither make radio transmissions while racing nor receive radio communications not available to all boats, except in an emergency or when using equipment provided by the race committee. This restriction also applies to mobile telephones.

28 [DP] TRASH DISPOSAL

As sailors, we seek to protect and restore our oceans and coastal waters. See RRS 55. Boats shall not intentionally put trash in the water. Trash may be placed aboard support and race committee boats.

29 PRIZES

Medals will be awarded to the top 3 boats in each event. The Organising Authority may alter prizes if less than 10 boats are entered in an event.

30 [DP][SP] TRACKING EQUIPMENT

30.1 Before Competition/before Racing

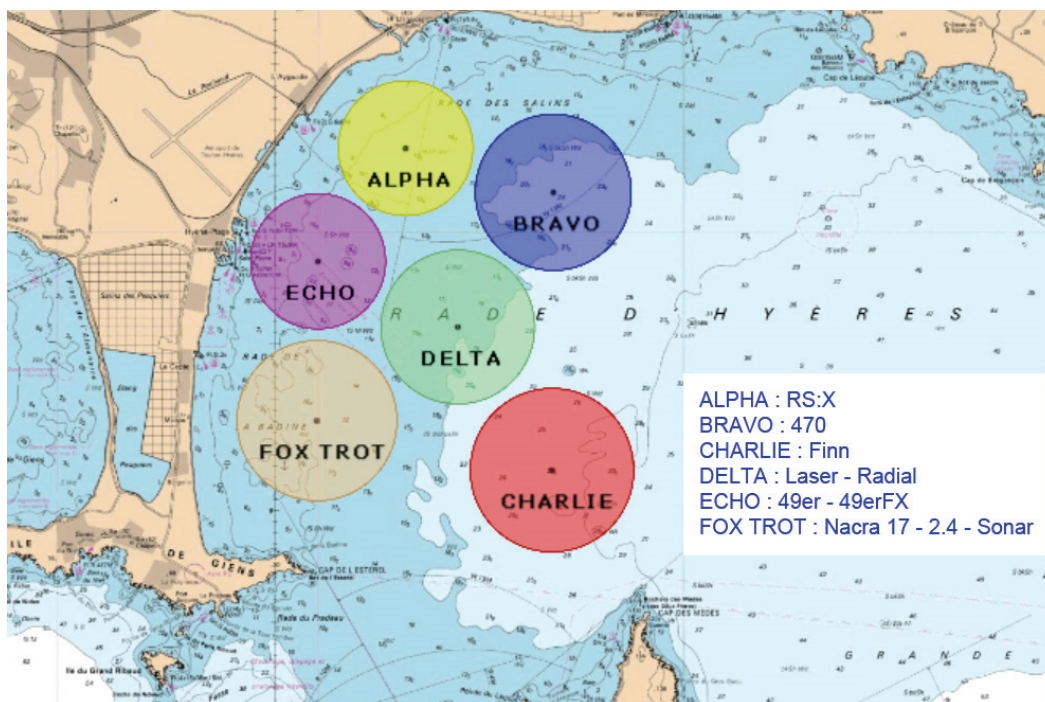
A tracking socket will be supplied to all competitors from their assigned tracking desk once their assignment to the gold fleet is known. Competitors shall securely mount the socket to their boat as per the supplied instructions. Athletes shall collect a tracking module from their assigned tracking desk, which must be securely fitted to the tracking socket before racing each day. The location of the assigned tracking desk for each event is:

- BAN Club for RSX and Nacra
- Beach master's tent for 49er and 49er FX
- Base Nautique Municipale near medical center for all other classes

30.2 Return to Shore

Competitors shall return the tracking module within the protest time limit to the same place that they received it.

ADDENDUM A - COURSE AREAS


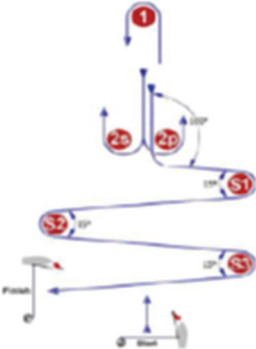
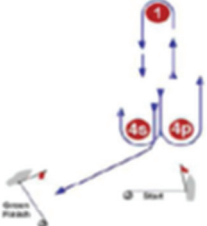
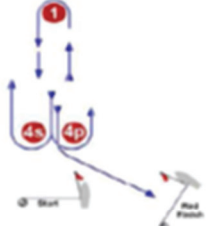




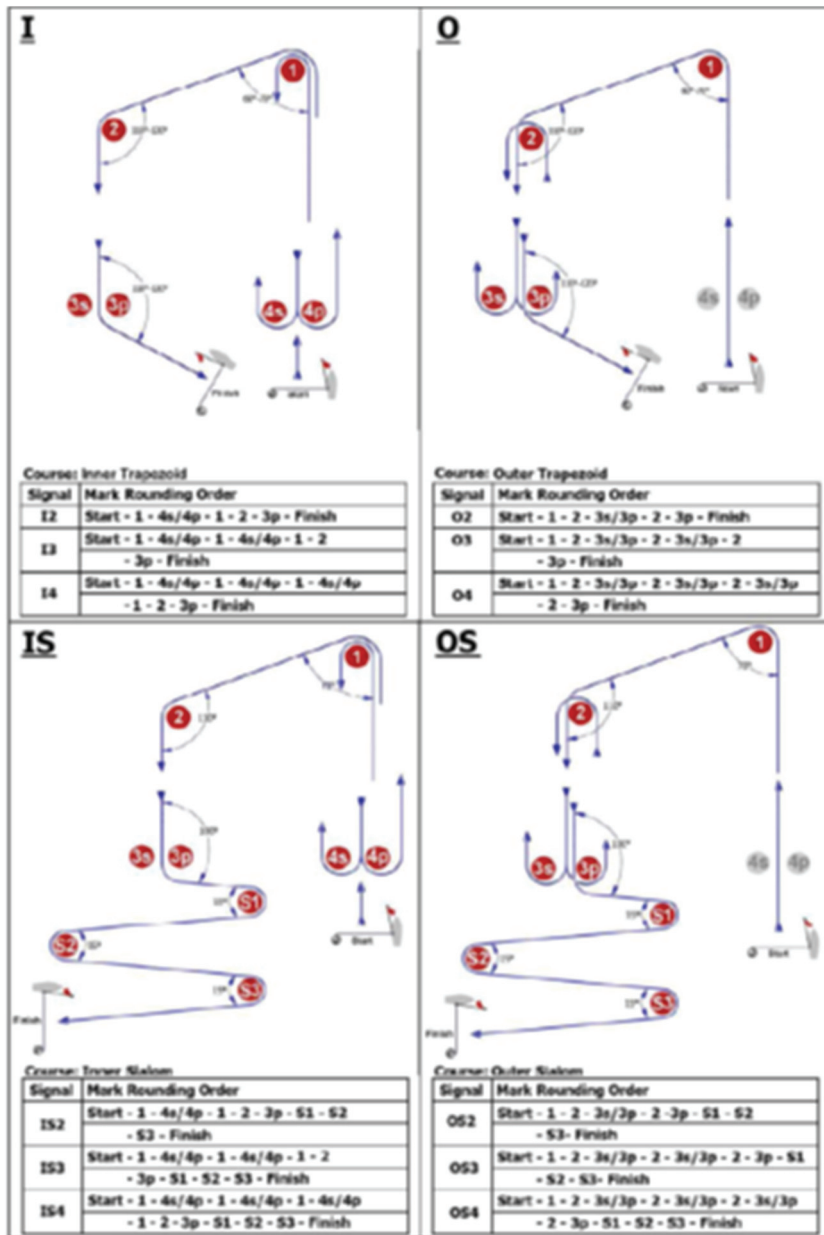
ALPHA RS:X M & F	BRAVO 470 M & F	CHARLIE FINN
Area Center : 43° 05, 76 N 006° 11, 55 E	Area Center : 43° 05, 33 N 006° 13, 41 E	Area Center : 43° 02, 81 N 006° 13, 14 E
Area diameter: 1,2 nm	Area diameter: 1,4 nm	Area diameter: 1,4 nm

DELTA LASER - LASER RADIAL	ECHO 49er - 49er FX	FOX TROT NACRA - 2.4 - SONAR
Area Center : 43° 04, 12 N 006° 12, 23 E	Area Center : 43° 04, 60 N 006° 10, 50 E	Area Center : 43° 03, 20 N 006° 10, 59 E
Area diameter: 1,4 nm	Area diameter: 1,2 nm	Area diameter: 1.4 nm

VHF CHANNELS			
COURSE AREA	VHF CHANNEL	COURSE AREA	VHF CHANNEL
ALPHA	67	DELTA	6
BRAVO	8	ECHO	77
CHARLIE	72	FOX TROT	15

ADDENDUM B - COURSE ILLUSTRATIONS

<p>L</p>  <p>Course: Windward/Leeward</p> <table border="1"> <thead> <tr> <th>Signal</th> <th>Mark Rounding Order</th> </tr> </thead> <tbody> <tr> <td>L2</td> <td>Start - 1 - 2s/2p - 1 - Finish</td> </tr> <tr> <td>L3</td> <td>Start - 1 - 2s/2p - 1 - 2s/2p - 1 - Finish</td> </tr> <tr> <td>L4</td> <td>Start - 1 - 2s/2p - 1 - 2s/2p - 1 - 2s/2p - 1 - Finish</td> </tr> </tbody> </table>	Signal	Mark Rounding Order	L2	Start - 1 - 2s/2p - 1 - Finish	L3	Start - 1 - 2s/2p - 1 - 2s/2p - 1 - Finish	L4	Start - 1 - 2s/2p - 1 - 2s/2p - 1 - 2s/2p - 1 - Finish	<p>LS</p>  <p>Course: Windward/Leeward With Stalem Finish</p> <table border="1"> <thead> <tr> <th>Signal</th> <th>Mark Rounding Order</th> </tr> </thead> <tbody> <tr> <td>LS2</td> <td>Start - 1 - 2s/2p - 1 - 2p - S1 - S2 - S3 - Finish</td> </tr> <tr> <td>LS3</td> <td>Start - 1 - 2s/2p - 1 - 2s/2p - 1 - 2p - S1 - S2 - S3 - Finish</td> </tr> <tr> <td>LS4</td> <td>Start - 1 - 2s/2p - 1 - 2s/2p - 1 - 2s/2p - 1 - 2p - S1 - S2 - S3 - Finish</td> </tr> </tbody> </table>	Signal	Mark Rounding Order	LS2	Start - 1 - 2s/2p - 1 - 2p - S1 - S2 - S3 - Finish	LS3	Start - 1 - 2s/2p - 1 - 2s/2p - 1 - 2p - S1 - S2 - S3 - Finish	LS4	Start - 1 - 2s/2p - 1 - 2s/2p - 1 - 2s/2p - 1 - 2p - S1 - S2 - S3 - Finish
Signal	Mark Rounding Order																
L2	Start - 1 - 2s/2p - 1 - Finish																
L3	Start - 1 - 2s/2p - 1 - 2s/2p - 1 - Finish																
L4	Start - 1 - 2s/2p - 1 - 2s/2p - 1 - 2s/2p - 1 - Finish																
Signal	Mark Rounding Order																
LS2	Start - 1 - 2s/2p - 1 - 2p - S1 - S2 - S3 - Finish																
LS3	Start - 1 - 2s/2p - 1 - 2s/2p - 1 - 2p - S1 - S2 - S3 - Finish																
LS4	Start - 1 - 2s/2p - 1 - 2s/2p - 1 - 2s/2p - 1 - 2p - S1 - S2 - S3 - Finish																
<p>LG</p>  <p>Course: Windward/Leeward</p> <table border="1"> <thead> <tr> <th>Signal</th> <th>Mark Rounding Order</th> </tr> </thead> <tbody> <tr> <td>LG2</td> <td>Start - 1 - 4s/4p - 1 - 4s - Finish</td> </tr> <tr> <td>LG3</td> <td>Start - 1 - 4s/4p - 1 - 4s/4p - 1 - 4s - Finish</td> </tr> <tr> <td>LG4</td> <td>Start - 1 - 4s/4p - 1 - 4s/4p - 1 - 4s/4p - 1 - 4s - Finish</td> </tr> </tbody> </table>	Signal	Mark Rounding Order	LG2	Start - 1 - 4s/4p - 1 - 4s - Finish	LG3	Start - 1 - 4s/4p - 1 - 4s/4p - 1 - 4s - Finish	LG4	Start - 1 - 4s/4p - 1 - 4s/4p - 1 - 4s/4p - 1 - 4s - Finish	<p>LR</p>  <p>Course: Windward/Leeward</p> <table border="1"> <thead> <tr> <th>Signal</th> <th>Mark Rounding Order</th> </tr> </thead> <tbody> <tr> <td>LR2</td> <td>Start - 1 - 4s/4p - 1 - 4p - Finish</td> </tr> <tr> <td>LR3</td> <td>Start - 1 - 4s/4p - 1 - 4s/4p - 1 - 4p - Finish</td> </tr> <tr> <td>LR4</td> <td>Start - 1 - 4s/4p - 1 - 4s/4p - 1 - 4s/4p - 1 - 4p - Finish</td> </tr> </tbody> </table>	Signal	Mark Rounding Order	LR2	Start - 1 - 4s/4p - 1 - 4p - Finish	LR3	Start - 1 - 4s/4p - 1 - 4s/4p - 1 - 4p - Finish	LR4	Start - 1 - 4s/4p - 1 - 4s/4p - 1 - 4s/4p - 1 - 4p - Finish
Signal	Mark Rounding Order																
LG2	Start - 1 - 4s/4p - 1 - 4s - Finish																
LG3	Start - 1 - 4s/4p - 1 - 4s/4p - 1 - 4s - Finish																
LG4	Start - 1 - 4s/4p - 1 - 4s/4p - 1 - 4s/4p - 1 - 4s - Finish																
Signal	Mark Rounding Order																
LR2	Start - 1 - 4s/4p - 1 - 4p - Finish																
LR3	Start - 1 - 4s/4p - 1 - 4s/4p - 1 - 4p - Finish																
LR4	Start - 1 - 4s/4p - 1 - 4s/4p - 1 - 4s/4p - 1 - 4p - Finish																
<p>IA</p>  <p>Course: Same As Course I Except With Offset Mark 1A</p> <table border="1"> <thead> <tr> <th>Signal</th> <th>Mark Rounding Order</th> </tr> </thead> <tbody> <tr> <td>IA2</td> <td>Start - 1 - 1a - 4s/4p - 1 - 1a - 2 - 3p - Finish</td> </tr> <tr> <td>IA3</td> <td>Start - 1 - 1a - 4s/4p - 1 - 1a - 4s/4p - 1 - 1a - 2 - 3p - Finish</td> </tr> <tr> <td>IA4</td> <td>Start - 1 - 1a - 4s/4p - 1 - 1a - 4s/4p - 1 - 1a - 4s/4p - 1 - 1a - 2 - 3p - Finish</td> </tr> </tbody> </table>	Signal	Mark Rounding Order	IA2	Start - 1 - 1a - 4s/4p - 1 - 1a - 2 - 3p - Finish	IA3	Start - 1 - 1a - 4s/4p - 1 - 1a - 4s/4p - 1 - 1a - 2 - 3p - Finish	IA4	Start - 1 - 1a - 4s/4p - 1 - 1a - 4s/4p - 1 - 1a - 4s/4p - 1 - 1a - 2 - 3p - Finish	<p>LA</p>  <p>Course: Same As Course L Except With Offset Mark 1A</p> <table border="1"> <thead> <tr> <th>Signal</th> <th>Mark Rounding Order</th> </tr> </thead> <tbody> <tr> <td>LA2</td> <td>Start - 1 - 1a - 2s/2p - 1 - 1a - Finish</td> </tr> <tr> <td>LA3</td> <td>Start - 1 - 1a - 2s/2p - 1 - 1a - 2s/2p - 1 - 1a - Finish</td> </tr> <tr> <td>LA4</td> <td>Start - 1 - 1a - 2s/2p - 1 - 1a - 2s/2p - 1 - 1a - 2s/2p - 1 - 1a - Finish</td> </tr> </tbody> </table>	Signal	Mark Rounding Order	LA2	Start - 1 - 1a - 2s/2p - 1 - 1a - Finish	LA3	Start - 1 - 1a - 2s/2p - 1 - 1a - 2s/2p - 1 - 1a - Finish	LA4	Start - 1 - 1a - 2s/2p - 1 - 1a - 2s/2p - 1 - 1a - 2s/2p - 1 - 1a - Finish
Signal	Mark Rounding Order																
IA2	Start - 1 - 1a - 4s/4p - 1 - 1a - 2 - 3p - Finish																
IA3	Start - 1 - 1a - 4s/4p - 1 - 1a - 4s/4p - 1 - 1a - 2 - 3p - Finish																
IA4	Start - 1 - 1a - 4s/4p - 1 - 1a - 4s/4p - 1 - 1a - 4s/4p - 1 - 1a - 2 - 3p - Finish																
Signal	Mark Rounding Order																
LA2	Start - 1 - 1a - 2s/2p - 1 - 1a - Finish																
LA3	Start - 1 - 1a - 2s/2p - 1 - 1a - 2s/2p - 1 - 1a - Finish																
LA4	Start - 1 - 1a - 2s/2p - 1 - 1a - 2s/2p - 1 - 1a - 2s/2p - 1 - 1a - Finish																



<p>LGA</p> <p>Course: Same as Course LG except with Offset Mark 1A</p>		<p>LRA</p> <p>Course: Same as Course LR except with offset Mar 1A</p>	
Signal	Mark Rounding Order	Signal	Mark Rounding Order
LGA2	Start-1-1a-4s/4p-1-1a-4s-Finish	LRA2	Start-1-1a-4s/4p-1-1a-4p-Finish
LGA3	Start-1-1a-4s/4p-1-1a-4s/4p-1-1a-4s-Finish	LRA3	Start-1-1a-4s/4p-1-1a-4s/4p-1-1a-4p-Finish
LGA4	Start-1-1a-4s/4p-1-1a-4s/4p-1-1a-4s/4p-1-1a-4s-Finish	LRA4	Start-1-1a-4s/4p-1-1a-4s/4p-1-1a-4s/4p-1-1a-4p-Finish

ADDENDUM C - SCHEDULE OF RACE

EVENT	AREA	Total Races	Mon 21		Tue 22		Wed 23		Thu 24		Fri 25		Sat 26	
			time	#	time	#	Time	#	time	#	time	#	time	#
Men's Windsurfer	ALPHA	16	1100	3	1100	3	1100	3	1100	3	1100	3	TBA	1
Women's Windsurfer	ALPHA	16	1100	3	1100	3	1100	3	1100	3	1100	3	TBA	1
Men's Two Person Dinghy	BRAVO	12	1100	3	1100	2	1100	2	1100	2	1100	2	TBA	1
Women's Two Person Dinghy	BRAVO	11	1100	2	1100	2	1100	2	1100	2	1100	2	TBA	1
Men's One Person Dinghy Heavy	CHARLIE	11	1100	2	1100	2	1100	2	1100	2	1100	2	TBA	1
Men's One Person Dinghy	DELTA	12	1100	3	1300	2	1100	2	1300	2	1100	2	TBA	1
Women's One Person Dinghy	DELTA	12	1300	3	1100	2	1300	2	1100	2	1300	2	TBA	1
Men's Skiff	ECHO	18	1100	3	1300	3	1100	3	1300	3	1100	3	TBA	3
Women's Skiff	ECHO	18	1300	3	1100	3	1300	3	1100	3	1300	3	TBA	3
Mixed Two Person Multihull	FOX TROT	16	1100	3	1300	3	1100	3	1300	3	1100	3	TBA	1
Paralympic One Person Keelboat	FOX TROT	10	1300	2	1100	2	1300	2	1100	2	1300	2		
Paralympic Three Person Keelboat	FOX TROT	10	1300	2	1100	2	1300	2	1100	2	1300	2		

ADDENDUM D - FORMAT

EVENT	Number of fleets	Max number of boats in the Gold Fleet	Total number of races
Paralympic Single Person	1		10
Paralympic Three Person	1		10
Men's Windsurfer	2	50%	16
Women's Windsurfer	1		16
Men's Two Person Dinghy	2	50%	12
Women's Two Person Dinghy	1		11
Heavyweight Men's One Person Dinghy	1		11
Men's One Person Dinghy	2	50%	12
Women's One Person Dinghy	2	50%	12
Men's Skiff	2QS /3FS	25	18
Women's Skiff	2	25	18
Mixed Two Person Multihull	2	50%	16

ADDENDUM E – SUPPORT BOATS REGULATIONS

1. General

- 1.1. These Support Boat Regulations (SBR) shall apply from 00:00 on Saturday the 19th of April until 00:00 on Sunday the 27th of April.
- 1.2. For the purposes of these regulations, a support boat includes any boat that is under the control or direction of a person who is or may provide physical or advisory support to an athlete, including the gathering of data that may be used at a later time.
- 1.3. The Organizing Authority may inspect boats at any time to ensure that they comply with these regulations, and the person responsible for the boat shall facilitate such inspection.
- 1.4. An alleged breach of any of these regulations may be referred to the International Jury for a hearing. As a result of the hearing, the International Jury may instruct the Organizing Authority to withdraw accreditation and access rights from the driver or person in charge, with or without the option of substitution, either for a specified period or for the remainder of the competition. Note also, action may be taken under RRS 69.
- 1.5. The Organizing Authority may change these regulations at any time. Any changes will be posted on the Official Noticeboard and circulated to team leaders.
- 1.6. The Organizing Authority may, at its discretion, refuse to register support boats not deemed to be suitable.
- 1.7. Support boats and designated drivers shall be registered at the Regatta Office either before leaving the venue by water for the first time or by 18:00 on the day before the first race of the Event that it is supporting, whichever is earlier.
- 1.7.1. Each boat shall be insured with valid third-party liability insurance with a minimum coverage of € 1.500.000,00€ (or equivalent) per incident.
- 1.7.2. Only an accredited person may be a designated driver.
- 1.7.3. The person registering the support boat shall confirm that:
- a valid insurance certificate showing proof of third-party liability coverage as required by 1.7.1 has been obtained;
 - each designated driver has a motorboat driving license recognized by a national authority appropriate to that boat; and
 - anyone who will be using a radio has an appropriate radio operation license recognized by a national authority.
- 1.8. Support boats shall be marked with the applicable national sail letters (see RRS1.1) clearly displayed on both sides of the boat in strongly contrasting colors at all times while afloat. The minimum height for the letters shall be 200mm. The letters will not be provided by the Organizing Authority.
- 1.9. Support boats shall display on the console a special sticker provided by the OA.

2. Sailing Venue

- 2.1. Support boats shall use the designated slipway/area for launching. Once launched, trailers shall be moved immediately to the trailer park or as otherwise directed by the Organizing Authority.
- 2.2. Only registered support boats will be allowed into the sailing venue.
- 2.3. When not in use, support boats shall be appropriately berthed at the sailing venue in the allocated areas for support boats for the entire time that these SBR apply.
- 2.4. Support boats shall not use the dinghy launching slipways or keelboat pontoons for any purpose whatsoever, including mooring, launching and retrieval, and loading and unloading of equipment.

3. Safety

- 3.1. Support boats shall carry on board:
- a) life jackets / buoyancy aid for all passengers and the driver
 - b) first-aid kit;
 - c) VHF radio;
 - d) device for making a sound signal;
 - e) compass;
 - f) adequate anchor and tackle for conditions and depth;
 - g) tow rope (minimum 15m long and 10mm thick);

- h) operational engine kill cord (also known as a safety lanyard or automatic engine immobilizer);
- i) hand pump or bailer
- j) knife; and
- k) any additional safety equipment required by local maritime law.

It is recommended that life jackets be worn at all times when afloat. It is strongly recommended that the kill cord is used at all times when the engine is running.

3.2. The maximum plated / certified passenger limits for the boat shall never exceed.

3.3. Team leaders are responsible for overseeing the safe operations of their support boats on the water, including knowledge of who is afloat and ensuring their safe return to the venue.

3.4. At all times, the registered driver(s) of a support boat shall comply with directions given by a Race Official. In particular, this includes assisting in rescue operations when requested to do so.

3.5. Support boats shall comply with local harbor and marina regulations, including speed limits.

4. General restrictions

4.1. The registered driver(s) of a support boat will be responsible for the control of the boat at all times and will be held responsible for any inappropriate behavior, dangerous actions or improper practices, or actions affecting the fairness or safety of competition.

4.2. Support boats shall not leave any device, piece of equipment, buoy, marker or similar item permanently in the water. Temporary use of floating objects is allowed for current measurement. These objects shall be removed as soon as the measurement has been taken.

4.3. Support boats should take particular care to minimize their wash when transiting the course areas.

5. Race Area Restrictions

5.1. Support Boats shall not be positioned:

5.1.1 Closer than 50 meters of any boat racing

5.1.2 Within 50 meters of the starting line and marks from the time of the preparatory signal until all boats have left the starting area, or the race committee signals a postponement, general recall or abandonment.

5.1.3 Between any boat racing and the next mark of the course.

5.1.4 Between the inner and outer trapezoid courses when boats are racing on both courses.

5.1.5 Within 50 meters of any mark of the course while boats are in the vicinity of that mark.

5.1.6 Within 50 meters of the finishing line and marks while boats are finishing.

5.2 In addition, support boats that are motoring above 5 knots shall remain at least 150 meters from any boat racing.

5.3 Additional restrictions apply to medal races and will be posted on the official notice board.

ADDENDUM Q - UMPIRED FLEET RACES

This addendum has been approved by ISAF in accordance with rule 86.2 and ISAF Regulation 28.1.3.

Version: January 21, 2013

These sailing instructions change the definition Proper Course, and rules 20, 28.2, 44, 60, 61, 62, 63, 64.1, 65, 66, 70, 78.3 and B5.

Q1 CHANGES TO RACING RULES

Additional changes to rules are made in instructions Q2, Q3, Q4, and Q5.

Q1.1 Changes to the Definitions and the Rules of Part 2 and Part 4

(a) Add to the definition Proper Course: 'A boat taking a penalty or maneuvering to take a penalty is not sailing a proper course.'

(b) When rule 20 applies, the following arm signals are required in addition to the hails:

(1) For 'Room to tack', repeatedly and clearly pointing to windward; and

(2) For 'You tack', repeatedly and clearly pointing at the other boat and waving the arm to windward.

Instruction Q1.1(b) does not apply to boards.

Q1.2 Changes to Rules Involving Protests, Requests for Redress, Penalties and Exoneration

(a) The first sentence of rule 44.1 is replaced with: 'A boat may take a One-Turn Penalty when she may have broken a rule of Part 2 (except rule 14 when she has caused damage or injury) or rule 31 or 42 while racing.'

(b) For boards, the One-Turn Penalty is one 360° turn with no requirement for a tack or a gybe.

(c) Rule 60.1 is replaced with 'A boat may protest another boat or request redress provided she complies with instructions Q2.1 and Q2.4.'

(d) The third sentence of rule 61.1(a) and all of rule 61.1(a) (2) are deleted. Rule B5 is deleted.

(e) Rules 62.1(a), (b) and (d) are deleted. In a race where this addendum applies, there shall be no scoring adjustments for redress given under any of these rules for a previous race.

(f) Rule 64.1(a) is changed so that the provision for exonerating a boat may be applied by the umpires without a hearing, and it takes precedence over any conflicting instruction of this addendum.

(g) Rules P1 to P4 shall not apply.

Q2 PROTESTS AND REQUESTS FOR REDRESS BY BOATS

Q2.1 While racing, a boat may protest another boat under a rule of Part 2 (except rule 14) or under rule 31 or 42; however, a boat may only protest under a rule of Part 2 for an incident in which she was involved. To do so she shall hail 'Protest' and conspicuously display a red flag at the first reasonable opportunity for each. She shall remove the flag before, or at the first reasonable opportunity after a boat involved in the incident has taken a penalty voluntarily or after an umpire's decision. However, a board need not display a red flag.

Q2.2 A boat that protests as provided in instruction Q2.1 is not entitled to a hearing. Instead, a boat involved in the incident may acknowledge breaking a rule by taking a One-Turn Penalty as described in rule 44.2. If the protested boat does not take a penalty voluntarily, an umpire will decide whether to penalize any boat and signal the decision as provided in instruction Q3.1.

Q2.3 At the finishing line, the race committee will inform the competitors about each boat's finishing place or scoring abbreviation. After this has been done for all boats, the race committee will promptly display flag B with one sound. Two minutes later flag B will be removed with one sound.

Q2.4 A boat intending to

(a) Protest another boat under a rule other than instruction Q3.2 or Q4.2 (a), or a rule listed in instruction Q2.1,

(b) Protest another boat under rule 14 if there was contact that caused damage or Injury, or

(c) Request redress shall hail the race committee before or during the display of flag B. The same time limit applies to protests under instructions Q5.4 and Q5.5.

The protest committee may extend the time limit if there is good reason to do so.

Q2.5 The race committee will promptly inform the protest committee about any protests or requests for redress made under instruction Q2.4.

Q3 UMPIRE SIGNALS AND IMPOSED PENALTIES

Q3.1 An umpire will signal a decision as follows:

- (a) A green and white flag with one long sound means 'No penalty.'
- (b) A red flag with one long sound means 'A penalty is imposed or remains outstanding.' The umpire will hail or signal to identify each such boat.
- (c) A black flag with one long sound means 'A boat is disqualified.' The umpire will hail or signal to identify the boat disqualified.

Q3.2

- (a) A boat penalized under instruction Q3.1(b) shall take a One-Turn Penalty as described in rule 44.2.
- (b) A boat disqualified under instruction Q3.1(c) shall promptly leave the course area.

Q4 PENALTIES AND PROTESTS INITIATED BY AN UMPIRE; ROUNDING OR PASSING MARKS

Q4.1 When a boat

- (a) breaks rule 31 and does not take a penalty,
- (b) Breaks rule 42,
- (c) Gains an advantage despite taking a penalty,
- (d) Deliberately breaks a rule,
- (e) Commits a breach of sportsmanship, or
- (f) Fails to comply with instruction Q3.2 or to take a penalty when required to do so an umpire, an umpire may penalize her without a protest by another boat. The umpire may impose one or more One-Turn Penalties to be taken as described in rule 44.2, each signaled in accordance with instruction Q3.1(b), or disqualify her under instruction Q3.1(c), or report the incident to the protest committee for further action. If a boat is penalized under instruction Q4.1(f) for not taking a penalty or taking a penalty incorrectly, the original penalty is cancelled.

Q4.2

- (a) A boat shall not round or pass a mark on the wrong side. If she does so, she may correct her error as provided in rule 28.2 only if she does so before she rounds or passes the next mark or finishes.
- (b) When a boat breaks instruction Q4.2(a) and fails to correct her error before rounding or passing the next mark or finishing, an umpire may disqualify her under instruction Q3.1(c).

Q4.3 An umpire, who decides, based on his own observation or a report received from any source, that a boat may have broken a rule, other than instruction Q3.2 or Q4.2(a) or a rule listed in instruction Q2.1, may inform the protest committee for its action under rule 60.3. However, he will not inform the protest committee of an alleged breach of rule 14 unless there is damage or injury.

Q5 PROTESTS; REQUESTS FOR REDRESS OR REOPENING; APPEALS; OTHER PROCEEDINGS

Q5.1 No proceedings of any kind may be taken in relation to any action or non-action by an umpire.

Q5.2 A boat may not base an appeal on an alleged improper action, omission or decision of the umpires or the protest committee. In rule 66 the third sentence is changed to 'A party to the hearing may not ask for a reopening.'

Q5.3

- (a) Protests and requests for redress need not be in writing.
- (b) The protest committee may take evidence and conduct the hearing in any way it considers appropriate and may communicate its decision orally.
- (c) If the protest committee decides that a breach of a rule has had no effect on the outcome of the race, it may impose a penalty of points or fraction of points or make another arrangement it decides is equitable, which may be to impose no penalty.

Q5.4 The race committee will not protest a boat, except following a report under rule 43.1(c) or 78.3.

Q5.5 The protest committee may protest a boat under rule 60.3. However, it will not protest a boat for breaking instruction Q3.2 or Q4.2(a), a rule listed in instruction Q2.1, or rule 14 unless there is damage or injury.

Pre Event Class Rule Compliance

All competitors are reminded that for ISAF Sailing World Cup Events there is no pre event measurement. All teams shall individually identify their equipment (except Sails and RSX Fins) to be used in the ISAF Sailing World Cup HYERES TPM 2014 by fixing a boat dedicated event Equipment Limitation Sticker as provided by the Organising Authority to each identified piece of equipment.

Competitors are reminded that, in accordance with RRS 78, they are responsible for maintaining the boats in compliance with the Class rules. (For the purpose of RRS 78, competitors are considered the owners).

It is the team's responsibility to follow and adhere to the instruction sheet provided with the Equipment Limitation Stickers and return the signed form to the Registration desk on completion of stickering the identified equipment. Until the Registration desk is in receipt of the signed form a team is NOT considered entered.

Sails are to be presented to the Event Equipment Inspectors for stamping/signing at each venue, from 0900hrs to 1900hrs Saturday the 19th of April and 0900hrs to 1700hrs Sunday the 20th of April 2014. Uncertified (non-measured and not appropriately stamped) sails shall not be accepted.

Competitors wishing to make a repair to their boat, sails or equipment, after undergoing the stamping or stickering control, will submit a request to the Race Committee. If the change is authorized, the Event Equipment Inspector will establish a time to approve such repairs.

Request for a change of crew member, boat, sails, spars or equipment will be submitted to the Race Committee. Approval will only be given when it is satisfactorily proved that sails, spars or equipment are seriously damaged, were not deliberately broken and cannot be repaired to satisfaction. When immediately before the start of a race, a piece of equipment is lost or damaged and it is substituted or repaired, the competitor will notify the Race Committee at the first reasonable opportunity.

Requests for a change of crew member, or equipment for damage occurred during the day's races will be presented at the race office within the protest time limit.

After each race, an Equipment Inspector Officer can inform competitors that they have been selected for a measurement inspection including crew weight ashore. Once notified, the boat will go to the specified area ashore. Boats will be inspected as soon as possible once ashore

At least one representative of the crew must be present throughout the full boat control. If the Equipment Inspector Officer is not satisfied that while wet the boat exceeds in dry conditions the minimum weight required by the Class rules, he can deposit the boat to be weighed the following morning before 09:30 hrs, except on the last day of the race.

If a measurement varies with respect to the Class rules or the inspector has reasons to believe that an element of equipment has been modified, repaired or replaced without prior authorization, the inspector shall submit a written report to the Race Officer.

Organization advertising sticker

Organization advertising stickers shall be placed in both sides of the hull as follows:

Not more than 100mm from the deck

Not more than 100mm from the bow imaginary line as described below:

